

The Crisis Ministry is committed to easing the hardships of poverty in our community by providing food, financial assistance, and advocacy.

Princeton
Outreach
Projects, Inc.

The Crisis Ministry
of Princeton and
Trenton

4th Annual
Don Dickason
"Valentines for
Food" Warms
Hearts, Breaks
Record



Above, CM Steering Committee member **Dave Youmans** (left) and Rotary Club of Princeton member **Ahmed Azmy** helped to staff a busy **Valentines for Food** table in McCaffrey's Supermarket, Princeton Shopping Center. Working together, McCaffrey's and its generous shoppers, Rotary Club members, **23** area schools, and **15** area congregations raised **\$16,316** (and still counting)—including a \$5,000 McCaffrey's match—and over **900** bags filled with 8 tons of food. **THANK YOU!**

Have an idea for
Neighbor to Neighbor?
Send it to Sarah
Unger (sarahu@
thecrisisministry.org)

Neighbor to Neighbor



SPRING 2008

Let's set a new pace together!

The Crisis Ministry's supporters, volunteers, friends, and staff will get their feet moving Saturday morning, April 19, for the fourth annual **Footprints 2008 Walk-a-thon**. Funds raised for the event will support our hunger and homelessness prevention initiatives. We invite families and friends of all ages to sign up!

We will begin with sign-in at 8:30 a.m. in Kingston on Route 27, rain or shine, and walk along a lovely 5.2-mile round trip stretch along the Delaware & Raritan Canal tow path to Harrison St., Princeton.

"We are truly excited about what we can achieve this year," says event chairperson Beth Fitzgerald. "We are committed to raising more funds than ever, and just as determined to raise more awareness about the poverty that exists so close to home. **Let's walk together and make a difference!**"



Walkers, start your engines:

- ▶ **Visit www.thecrisisministry.org**—Register for the walk (*only \$10 for age 7 & up; maximum \$40 per family*) ... Cut & paste a fundraising letter to forward or mail to friends ... Make an online Footprints donation ... Download a full-color brochure with pledge form to carry with you ... Help us raise at least **\$35,000 with \$100 in donations or more per walker**
- ▶ **Coordinate** a Footprints walk-a-thon team at home, school, work, your congregation ... you name it!
- ▶ **Call the Footprints Hotline:** 609-396-9355, ext. 29
- ▶ **Where to park and meet:** Traveling north on Rt. 27, parking is on the left side of road after the River Rd. intersection. Look for the signs!

We are grateful to sponsors who make Footprints possible, including ...



So long, Sally! And thank you...

From Yom Kippur to Thanksgiving,

fall 2007 proved to be a season of plenty for the shelves of the Crisis Ministry.

The Jewish Center of Princeton, Har Sinai Temple, the Center for Jewish Life, Trinity Church, the Unitarian Universalist Church of Princeton, Princeton United Methodist Church, and St. Paul's Roman Catholic Church provided about 1,000 bags of high quality food that included many proteins and, in the case of St. Paul's, a generous Thanksgiving Food Drive donation of \$2,400. To top it off, members of Trinity and PUMC gathered in our Trenton store to organize and shelve with great gusto!

Nearly 200 well-wishers gathered Friday, December 7, in the Assembly Room of Nassau Presbyterian Church to honor the 15 years of leadership and service of **SALLY OSMER**, who now shares her many gifts as executive director of NAMI Mercer.

Sally's legacy of dedication and forward thinking led many friends to make generous contributions in her honor for our Utilities Assistance program. We thank all who gave. During the chilly months, these generous donations—amounting to more than \$7,000—enabled many low-income families to avoid the hard choice of whether to “heat or eat”.

Contributions to our **Utilities Assistance Program** continue to be warmly welcomed at www.thecrisisministry.org.



“We Do What We Can to Help Others...”

Imagine agonizing over whether to pick up a new bottle of baby shampoo, a tube of toothpaste ... even a bar of soap. Yet that is the reality for low-income people who qualify to receive Food Stamps. **That's right:** food stamps cannot be used toward the necessary hygiene items that most people take for granted!



We are deeply thankful to congregations, schools, and businesses whose donations allowed the Crisis Ministry to distribute those everyday items to every single person who came to us for food during the winter holidays. The collected tally filled 1,100 gift bags that brimmed with personal care essentials.

250 gift bags came from **Community Middle School in West Windsor**. Pictured above, members of the school's community building club assembled their contributions under the guidance of their faculty advisers Wendy Michalewsky and Faith Scibienski. Said one young member of the club, **“We do what we can to help others.”** Clearly, she and her fellow students went above and beyond in their mission to build community among one another while helping their neighbors in need.

Another shining light: our good friends at the **Presbyterian Church of Lawrenceville** pulled on their Levi's, rolled up their sleeves, and got busy helping others in a most inspiring way. They put into action the story of the Levites for **“Levi Sunday,”** the brainchild of music director **W. Bryce Hayes**. Thank you, PCOL!



TOUCHDOWN!

A "souper" effort for the Crisis Ministry

Second and third graders in the Junior Paws Club, the community service and outreach club of Ewing's Parkway Elementary School, collected canned soups, proteins, vegetables, and fruits for Crisis Ministry through the "Souper Bowl of Caring." Here, they hold up posters they made to hang along their school's hallways. **Do you know a school or scouting group that's looking for**

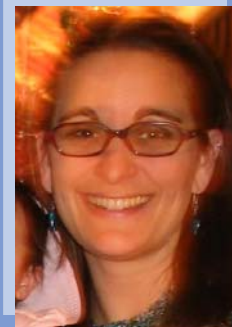
ways to serve their community? Drop a line to Volunteer Coordinator **Elizabeth Ferguson**. Her contact info is right below.

DID YOU KNOW ???

○ INTRODUCING CM'S VOLUNTEER COORDINATOR—

We are pleased to announce that our Princeton Office Director, **Elizabeth Ferguson**, has recently taken on the duties of Volunteer Coordinator as well. Elizabeth's many gifts include her ability to match people who want to help with just the right niche. If you have time, talent, enthusiasm, and/or expertise to share in our stores, our offices, or offsite (such as coordinating a food drive), contact **Elizabeth at cmvolunteer@gmail.com or 609-396-9355, ext. 24.**

A note of thanks to Elizabeth and her husband Brent, a teacher at The Lawrenceville School, for hosting and chaperoning the fun lock-in night attended by 500 high school students from many area private and public schools. The students kindly dedicated over \$6,000 in lock-in pledges to CM!



○ WE ARE COLLECTING E-MAIL ADDRESSES FROM OUR FRIENDS AND SUPPORTERS—

So that we can communicate with you more regularly about news, volunteer opportunities, and policy updates, we invite you to send your email address to our Administrative Assistant **Pat Foo** (patf@thecrisisministry.org). In the meantime, pay a visit any time to www.thecrisisministry.org, which we update regularly.

○ MINUTE FOR MISSION—

Many congregations will welcome representatives from the Crisis Ministry to deliver a "Minute for Mission" in March and April. Have you signed up yet? CM reps can address your congregants briefly about how our mission helps your congregation to fulfill its commitment to outreach. Please contact our Americorps colleague (and **Covenant Presbyterian Church** member) **Sandra Austin** at 609-396-9355.

WE THANK

the following for their financial leadership:

- ◆ **The Corella & Bertram F. Bonner Foundation**—support for food program
- ◆ **PNC Bank Fund of the Princeton Area Community Foundation**—general program support
- ◆ **Church and Dwight Employee Giving Fund**—support of our Security Deposit and Rent program
- ◆ **General Electric**—
- ◆ **Capital Health System**—Fall Benefit sponsor
- ◆ **Merrill Lynch**—Fall Benefit
- ◆ **United Way of Mercer County**—
- ◆ **Robert Wood Johnson Foundation**—Prescription medication program
- ◆ **J. Seward Johnson, Sr., 1963 Charitable Trust**—General operating support
- ◆ **Mercer County SSH**—support of Security Deposit, Rent and Utilities program
- ◆ **The Merancas Foundation**—general operating support
- ◆ **Anonymous corporate donor**—general operating
- ◆ **Anderson Corporate Foundation**—support for food program
- ◆ **The Gertrude L. Hirsch Charitable Foundation**—support of our Senior Foods Program
- ◆ **Linus Gilbert Foundation**—financial assistance to financial stability
- ◆ **Curtis McGraw Foundation**—general operating
- ◆ **James Kerney Foundation**—funds for a new, and much needed, delivery van
- ◆ **Janssen Pharmaceutica**—general operating support
- ◆ **Bristol-Meyers Squibb**—support for food and financial assistance programs
- ◆ **200+ supporters whose contributions of over \$37,000 helped us to surpass our goal during our spirited Fall 2007 benefit**

Princeton Outreach Projects, Inc.
THE CRISIS MINISTRY OF PRINCETON AND TRENTON

Princeton Office:
61 Nassau Street
Princeton, NJ 08542

Trenton Office:
123 East Hanover Street
Trenton, NJ 08608

The Crisis Ministry is a program of Princeton Outreach Projects, Inc., a non-profit 501(c)3 charitable organization incorporated in the state of New Jersey.

Non-Profit Org.
US Postage
PAID
Permit # 274
Princeton, NJ
08540

VISIT
www.thecrisisministry.org

Coming up from Crisis Ministry

We love to keep receiving those McCaffrey's receipts!

The Crisis Ministry receives a %1 donation from the sales receipts we return to our generous community friend **McCaffrey's Supermarkets**. This is a very easy way for McCaffrey's shoppers to help us to serve the low-income seniors, families, and other individuals who come to us in need of sustenance, shelter, and security.



All you do is save the receipts and leave them in the Crisis Ministry mailbox or drop box at your congregation, school, or business. If there is not currently a CM mailbox, consider setting one up. You can also mail your receipts to us (see our address above). Whichever you choose, please keep in mind that the receipts collected amount to thousands of dollars each year.

2nd Annual POVERTY SIMULATION Saturday, April 5. Carl Fields Center on the Princeton University campus, 10am–2pm. This second annual program, sponsored jointly by CM and Princeton's Student Volunteer Council, will give nearly 100 participants from area high schools, colleges, and congregations a virtual experience in the daily realities of poverty as well as offer insights into about how community service and interaction with low-income families can strengthen understanding of urban education challenges. Visit CM's website or send an email to svc@Princeton.edu to learn more or to sign up.

 **FOOTPRINTS 2008**—Join the fun and fundraising the morning of Saturday, **April 19**. Full details on front, on our website, and !

LUNCH & LEARN—FREE health screenings and lunch for seniors held in partnership with CM, Capital Health System, and First Presbyterian Church of Trenton. **June 19, August 2, October 30.**

